

Cyprus Import Control System (ICS)

Phase 1

SYSTEM ARCHITECTURE DOCUMENT

(SAD) - B2B Specification

Version 1

Department of
Information Technology
Services





Table of Contents

TABLE OF CONTENTS	2
LIST OF FIGURES	3
ACRONYMS / ABBREVIATIONS	4
1. INTRODUCTION	5
2. COMMUNICATION BASICS	6
3. SEQUENCE DIAGRAMS	10
4. XSDS FOR MESSAGE EXCHANGE	18
4.1 IcsRequest Message	18
4.2 IcsResponse Message	21
4.3 Ics Web Service Definiton	24



LIST OF FIGURES

Figure 1: IcsRequest Message Structure	7
Figure 2: IcsResponse Message Structure	9
Figure 3: Submission of an 315 Message	11
Figure 4: Submission of a 313 message.....	12
Figure 5: Submission of a 323 Message	13
Figure 6: Receive of a 351 message	14
Figure 7: Receive of a 328 message	15
Figure 8: Request for retrieving message by Date Range	16
Figure 9: Request for retrieving messages for a specific MRN.....	17



ACRONYMS / ABBREVIATIONS

Acronym/Abbreviations	Meaning
B2B	An electronic transaction between two organisations
DDNIA	Design Document for National Import Application
ENS	Entry summary declarations
FISS	Functional Import System Specifications
EC	European Communities
ICS	Import Control System
EO	Economic Operator
EU	European Union
ICT	Information and Communications Technologies
ISO	International Organisation for Standardisation
TBD	To be defined
UML	Unified Modelling Language
WP	Work Package
WWW	World Wide Web
XLS	Microsoft Excel file
XML	Extensible Markup Language
XSD	XML Schema Definition
SOAP	Simple Object Access Protocol
WSDL	An XML-based language that provides a model for describing Web services.



1. INTRODUCTION

The following paragraphs contain a description of the B2B communication between Traders applications and the ICS system. Its intended audience are developers of third party applications, aiming to communicate with the ICS System.

The document assumes that the reader is already familiar with the EU ICS specifications while good knowledge of FTSS and DDNIA is assumed.



2. COMMUNICATION BASICS

The B2B communication with the ICS System will take place through a unique Web Service that will act as a proxy to internal services (not exposed to traders) that serve a specific request.

Authentication between the Trader's Application and the ICS will be based on the WS-Security specification. The Trader's Application needs to authenticate itself to the ICS System through WS-Security information (Username, Password). This piece of information should be included in the header of the SOAP message. WS-Security offers a general-purpose mechanism, the 'UsernameToken Profile' which describes how a Web service client (Trader's Application) can supply a UsernameToken (Trader Username and Password) as a way to identify the requestor.

Communication between the Traders Application and ICS is always initiated by the former and by invoking the proxy Web Service and receiving the relevant response. The invocation of the Web Service and the corresponding response will be implemented based on the following two XML messages:

IcsRequest : Used for invoking the proxy Web Service (Figure 1)

IcsResponse: Used for propagating the Web Service results back to the caller (Figure 2)

The above, generic messages act as wrappers to actual XML messages defined and described by the EU ICS specification. In addition they contain certain metadata that enable the proxy Web Service to execute the internal service that materialises the request.

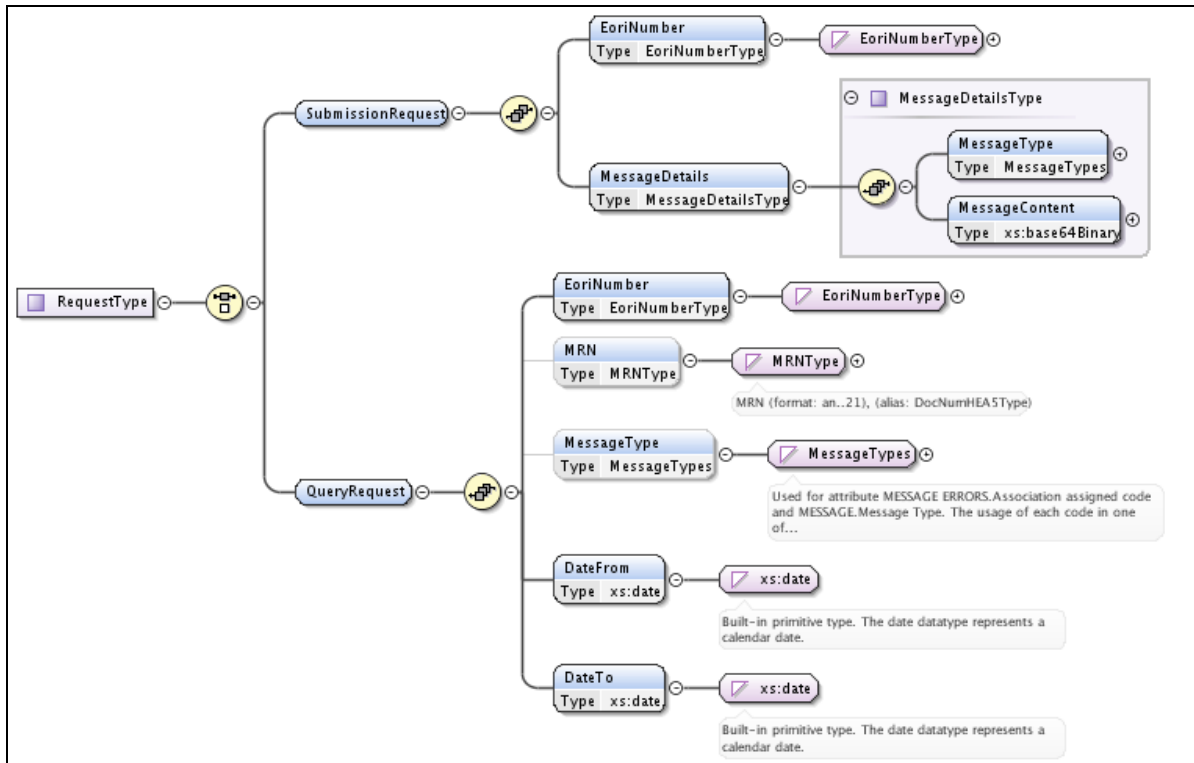


Figure 1: IcsRequest Message Structure

As already mentioned, invoking the proxy ICS Web Service implies sending an IcsRequest message.

The role of the IcsRequest message is dual. It can be used either for submitting an XML message according to the EU Specifications or for querying the ICS system for messages received and are addressed to a particular trader.

In this context, each IcsRequest can contain either a SubmissionRequest or a QueryRequest. For example, when the user wants to submit an ICS message (e.g. CC315A, CC323A etc.), then the IcsRequest should contain the element SubmissionRequest, which consists of the user's EoriNumber and the MessageDetails (MessageType and MessageContent). The MessageContent is the actual xml message (as defined by the EU ICS specification), initially zipped (compressed) and then encoded in Base64 format.

When the user wants to retrieve messages from the ICS System then the IcsRequest should contain the element QueryRequest. Within the QueryRequest element the trader defines the criteria for retrieving specific messages.

The available criteria are one or a combination of the following:

- MessageType



- a date range (*DateFrom*, *DateTo*)
- and optionally an *MRN*

For example, in order for the Trader's application to check if there are any messages for the Trader Today, the date range criteria can be used.

Alternatively all the messages for a particular message type e.g. CC351A can be retrieved or all the messages related to a particular *MRN*.

For each request (Web Service Invocation), the ICS System will respond with an *IcsResponse* message. The structure of this message can be found in Figure 2.

The content of the *IcsResponse* message depends on the content of the corresponding *IcsRequest* message.

If the request message contained a *SubmissionRequest* element, then the response will contain a *SubmissionResponse* element. Accordingly, if the request message was a *QueryRequest*, then the response will contain a *QueryResponse* element.

The *SubmissionResponse* element consists of the user's *EoriNumber*, the *SubmissionResult* and optionally a standard ICS Message (*MessageType*, *MessageContent* zipped and encoded in base64 format) and according the EU ICS specification.

The *QueryResponse* element consists of the user's *EoriNumber*, the *QueryResult* and optionally as many ICS Messages as the query will return.

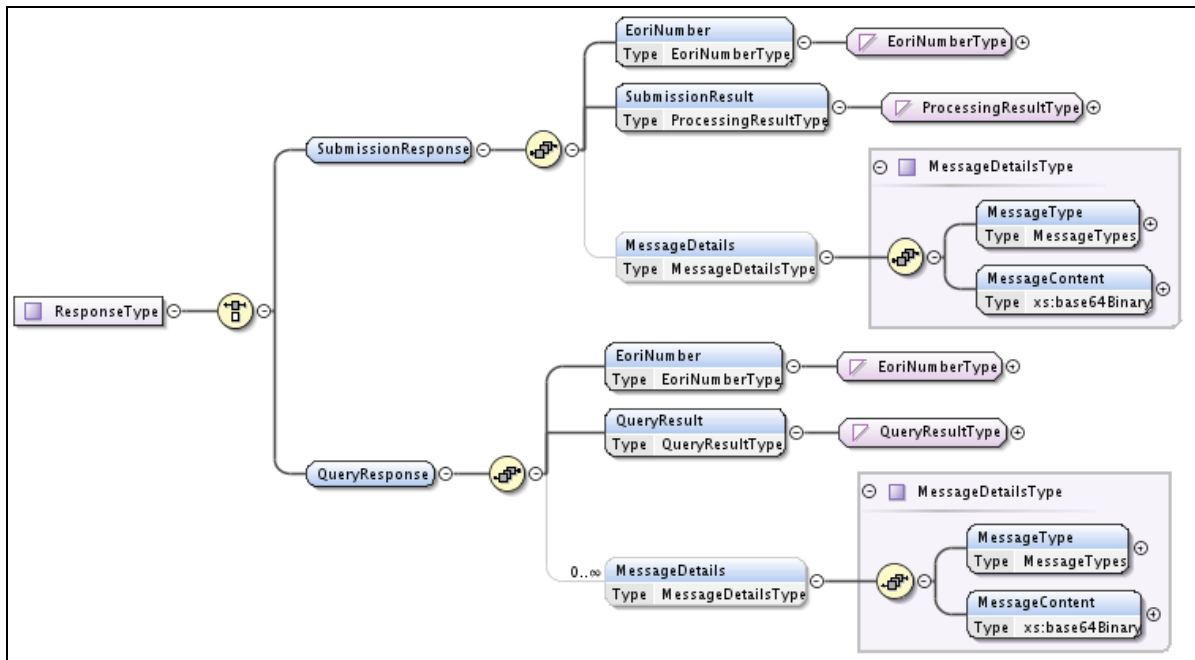


Figure 2: IcsResponse Message Structure



3. SEQUENCE DIAGRAMS

The following sequence diagrams depict the interaction between the Trader's application and the ICS System.

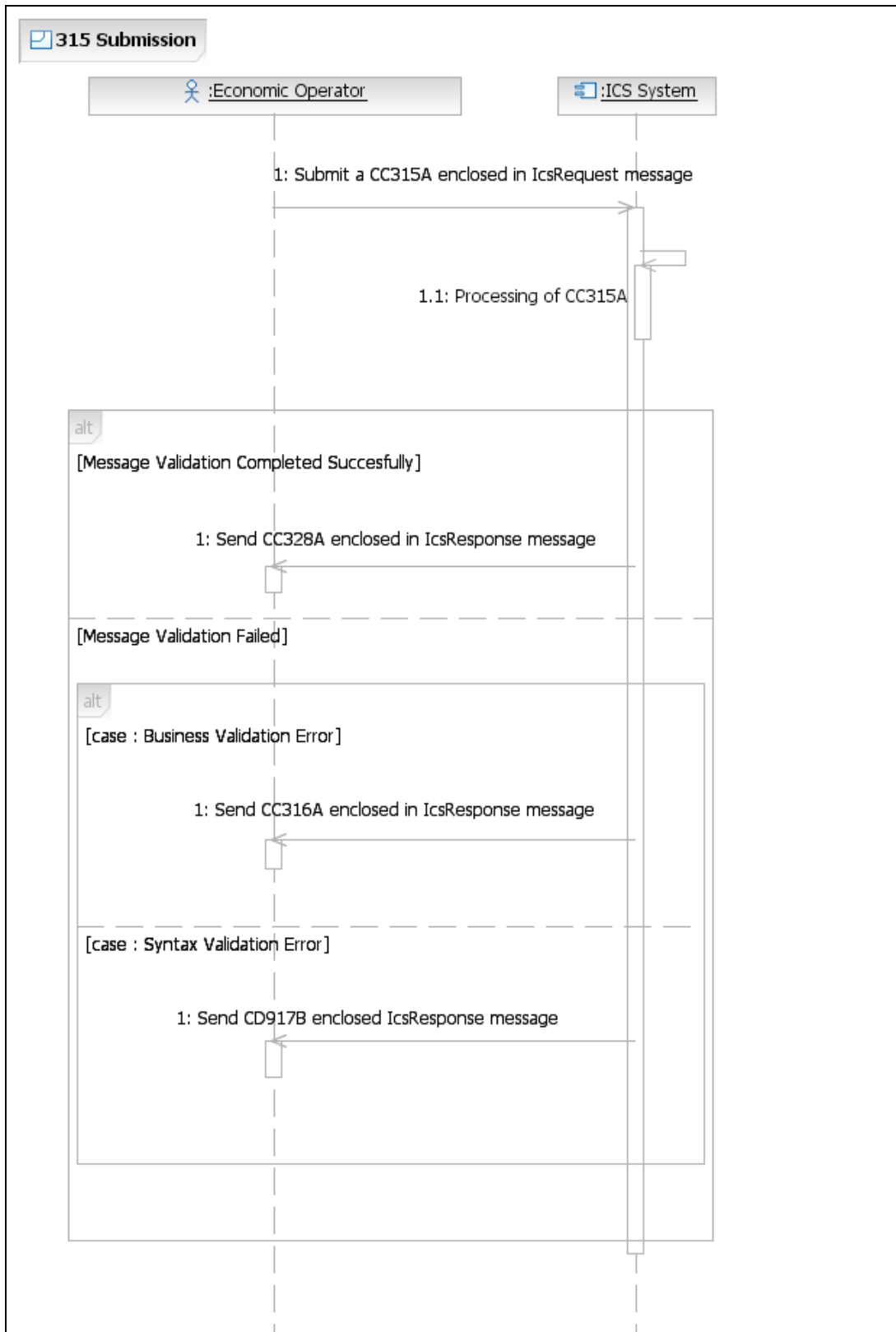


Figure 3: Submission of an 315 Message

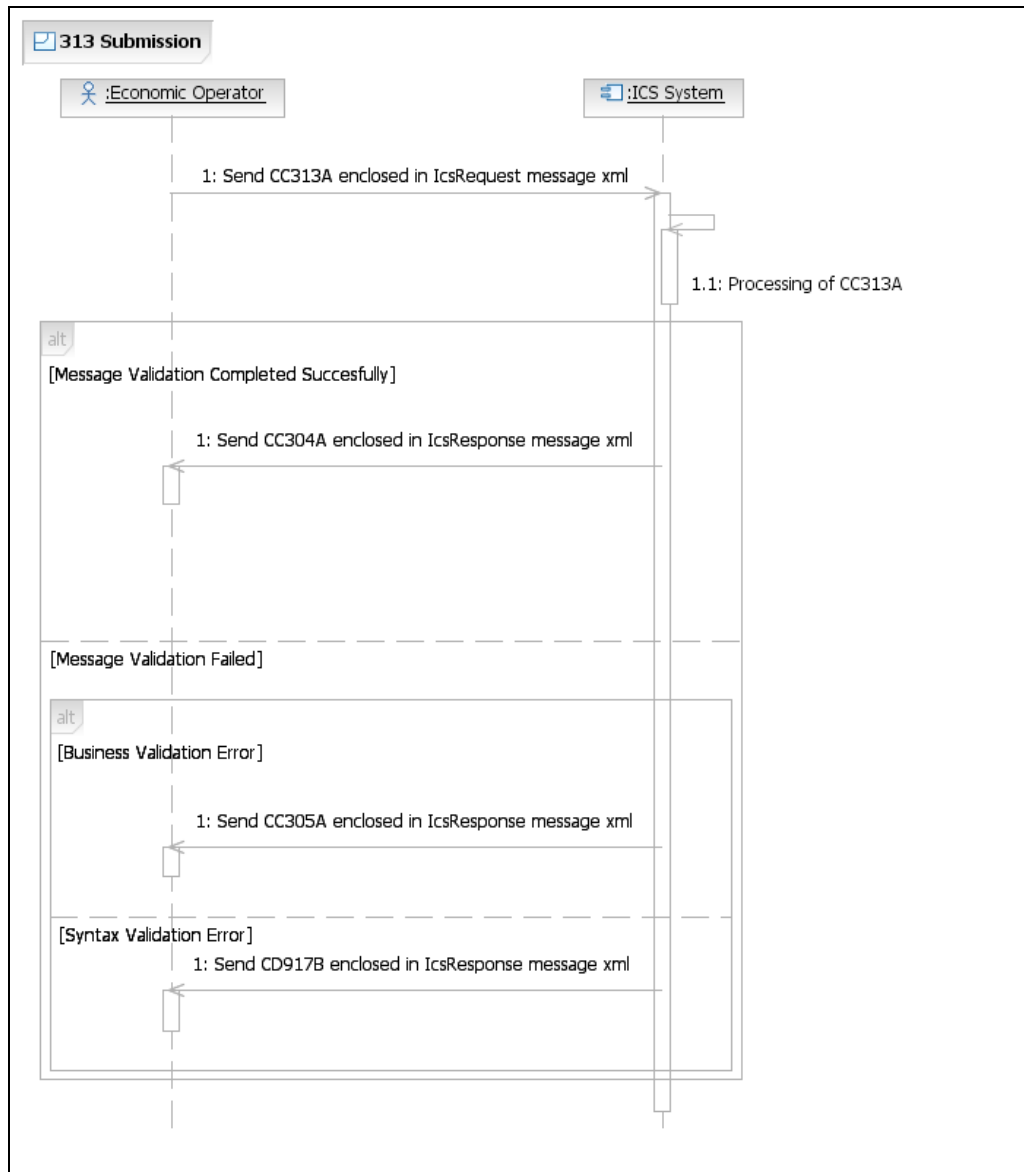


Figure 4: Submission of a 313 message

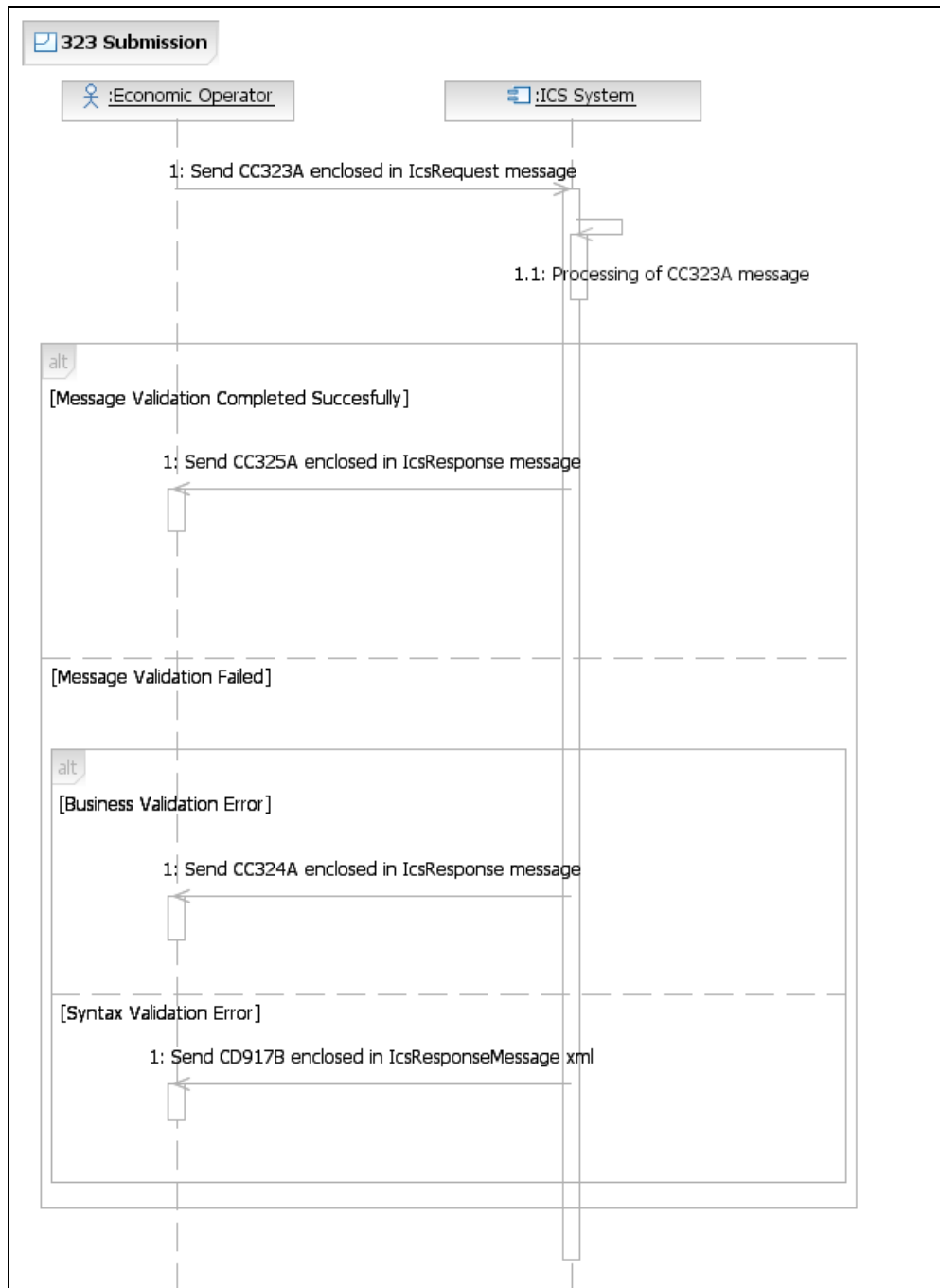


Figure 5: Submission of a 323 Message

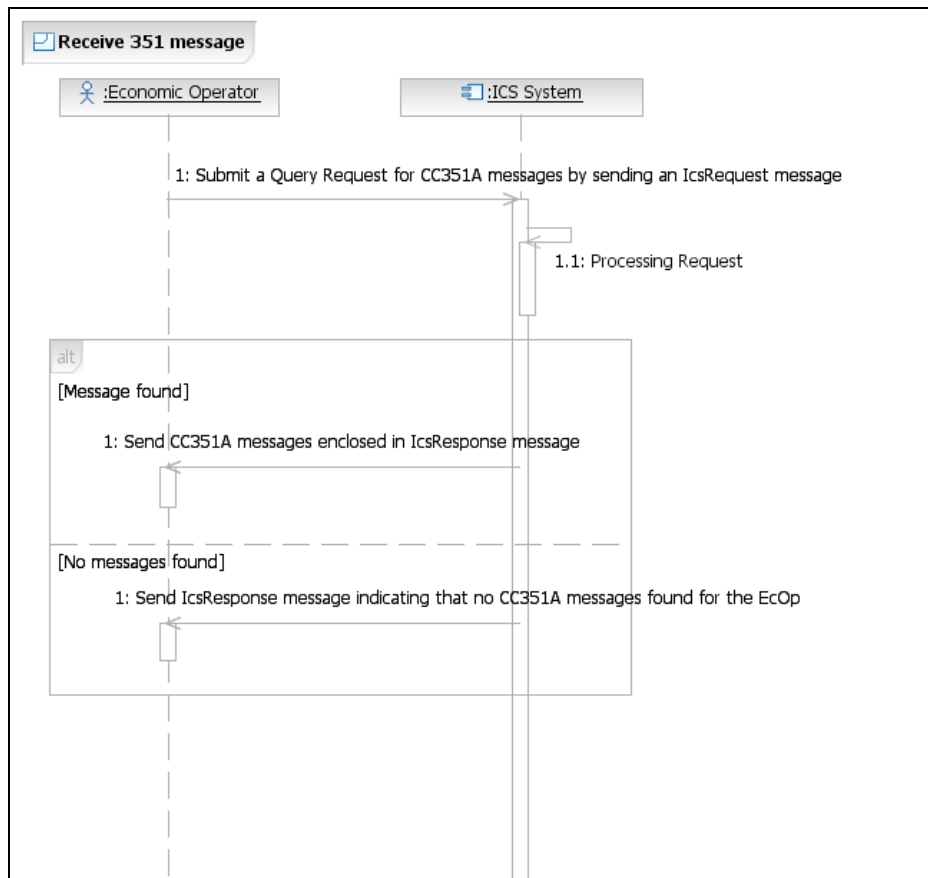


Figure 6: Receive of a 351 message

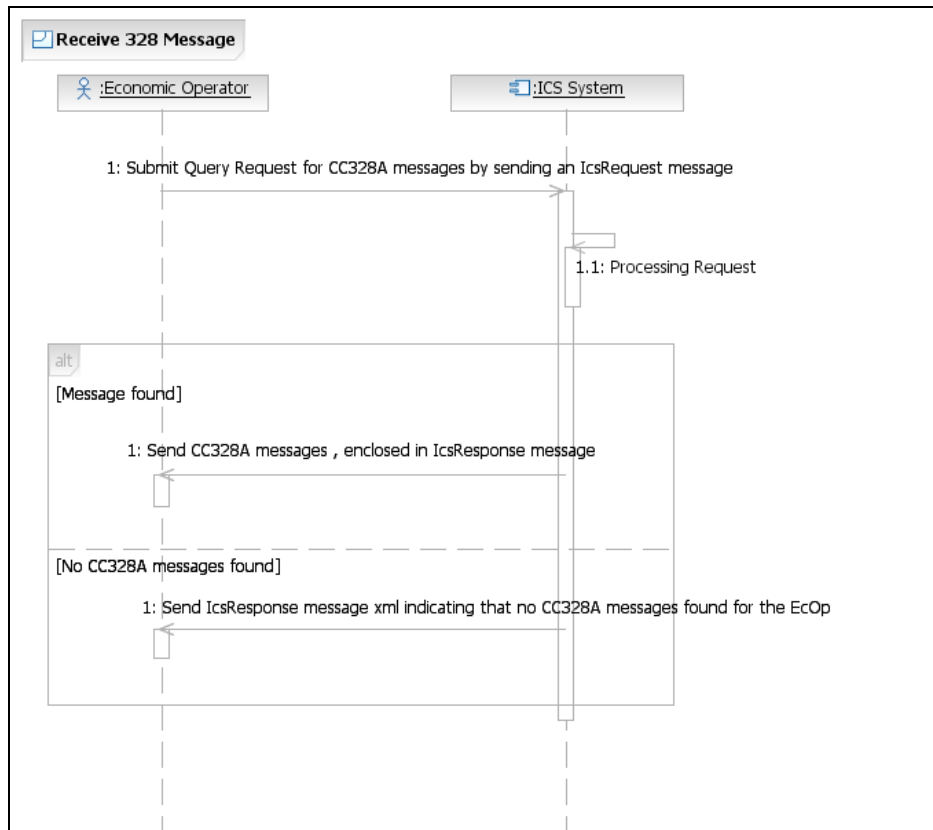


Figure 7: Receive of a 328 message

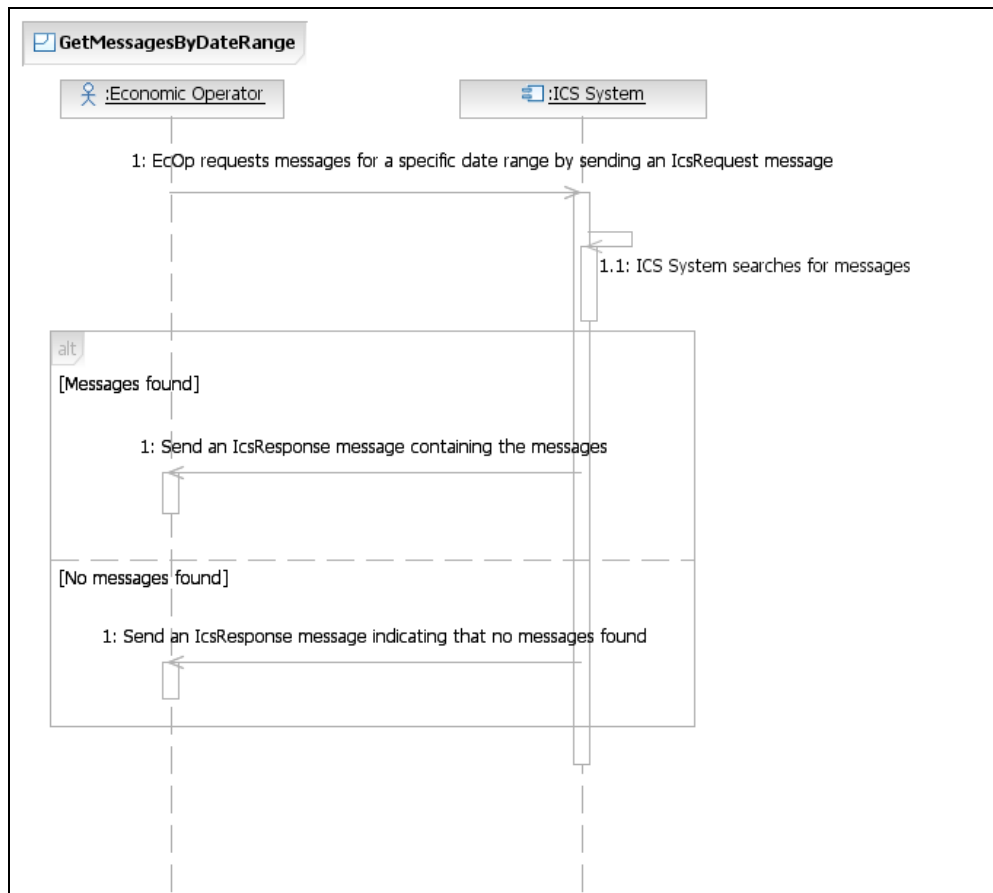


Figure 8: Request for retrieving message by Date Range

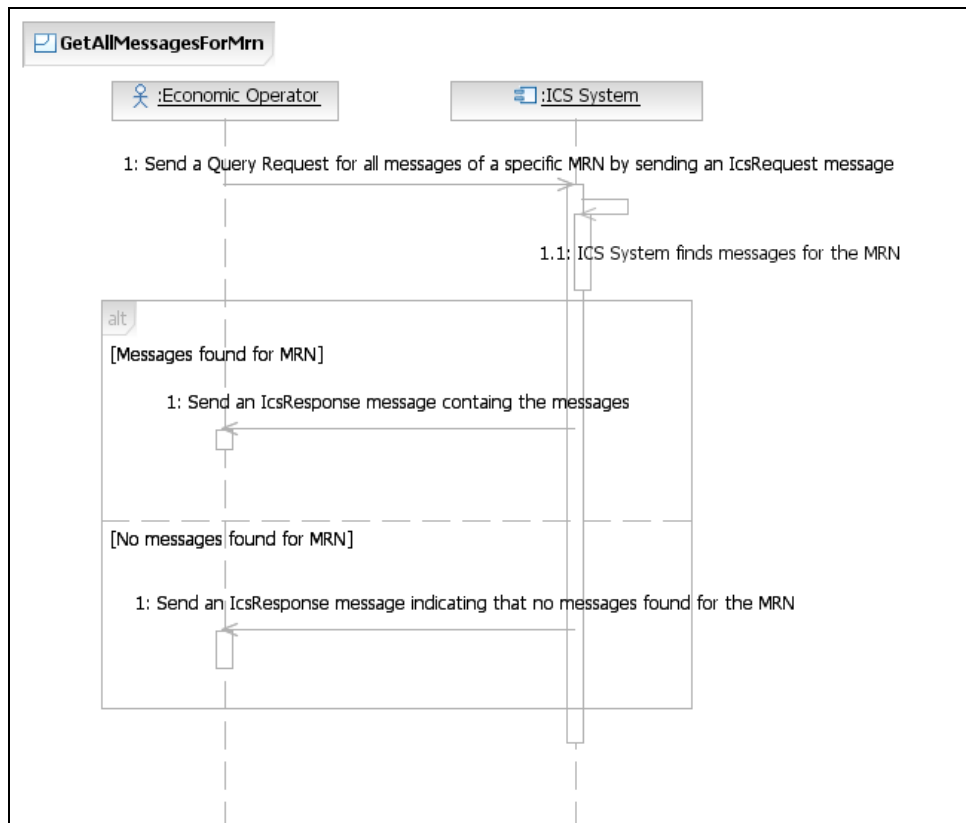


Figure 9: Request for retrieving messages for a specific MRN



4. XSDs FOR MESSAGE EXCHANGE

4.1 IcsRequest Message

```
<xs:schema xmlns:xs="http://www.w3.org/2001/XMLSchema"
targetNamespace="http://eurodyn.com/ws/IcsRequest"
  xmlns="http://eurodyn.com/ws/IcsRequest">
  <xs:element name="Request" type="RequestType"/>
  <xs:complexType name="RequestType">
    <xs:sequence>
      <xs:element name="SubmissionRequest" type="Submission" minOccurs="0"
maxOccurs="1"/>
      <xs:element name="QueryRequest" type="Query" minOccurs="0" maxOccurs="1"/>
    </xs:sequence>
  </xs:complexType>
  <xs:complexType name="MessageDetailsType">
    <xs:sequence>
      <xs:element name="MessageType" type="MessageTypes"/>
      <xs:element name="MessageContent" type="xs:base64Binary"/>
    </xs:sequence>
  </xs:complexType>
  <xs:simpleType name="EoriNumberType">
    <xs:restriction base="StringLatin1">
      <xs:minLength value="3"/>
      <xs:maxLength value="17"/>
      <xs:pattern value="[A-Z]{2}[^\\n\\r]*"/>
    </xs:restriction>
  </xs:simpleType>
  <xs:simpleType name="StringLatin1">
    <xs:restriction base="xs:string">
      <xs:pattern value="\\p{IsBasicLatin}+"/>
    </xs:restriction>
  </xs:simpleType>
  <xs:simpleType name="MRNType">
    <xs:annotation>
      <xs:documentation>MRN (format: an..21), (alias:
        DocNumHEA5Type)</xs:documentation>
    </xs:annotation>
    <xs:restriction base="AlphanumericCapitalType">
      <xs:pattern value="[0-9]{2}[A-Z]{2}[A-Z0-9]{13}[0-9]"/>
    </xs:restriction>
  </xs:simpleType>
```



```
</xs:restriction>
</xs:simpleType>
<xs:simpleType name="AlphanumericCapitalType">
  <xs:restriction base="AlphaNumType">
    <xs:pattern value="[A-Z0-9]*" />
  </xs:restriction>
</xs:simpleType>
<xs:simpleType name="AlphaNumType">
  <xs:annotation>
    <xs:documentation>Base class for all anN and an..N
    types</xs:documentation>
  </xs:annotation>
  <xs:restriction base="xs:token" />
</xs:simpleType>
<xs:simpleType name="MessageTypes">
  <xs:annotation>
    <xs:documentation>Used for attribute MESSAGE ERRORS.Association assigned code and
    MESSAGE.Message Type. The usage of each code in one of the UNSM templates is defined in the
    Remarks column. CC should in all cases be instantiated to the value of the particular domain in
    which the message is created. [Format: an..6]</xs:documentation>
  </xs:annotation>
  <xs:restriction base="xs:token">
    <xs:enumeration value="CC304A">
      <xs:annotation>
        <xs:documentation>Entry Summary Declaration Amendment
        Accepted</xs:documentation>
      </xs:annotation>
    </xs:enumeration>
    <xs:enumeration value="CC305A">
      <xs:annotation>
        <xs:documentation>Entry Summary Declaration Amendment
        Rejection</xs:documentation>
      </xs:annotation>
    </xs:enumeration>
    <xs:enumeration value="CC313A">
      <xs:annotation>
        <xs:documentation>Entry Summary Declaration Amendment</xs:documentation>
      </xs:annotation>
    </xs:enumeration>
    <xs:enumeration value="CC315A">
      <xs:annotation>
        <xs:documentation>Entry Summary Declaration</xs:documentation>
      </xs:annotation>
    </xs:enumeration>
  </xs:restriction>
</xs:simpleType>
```



```
</xs:annotation>
</xs:enumeration>
<xs:enumeration value="CC316A">
  <xs:annotation>
    <xs:documentation>Entry Summary Declaration Rejected</xs:documentation>
  </xs:annotation>
</xs:enumeration>
<xs:enumeration value="CC323A">
  <xs:annotation>
    <xs:documentation>Diversion Request Import</xs:documentation>
  </xs:annotation>
</xs:enumeration>
<xs:enumeration value="CC324A">
  <xs:annotation>
    <xs:documentation>Diversion Request Rejected</xs:documentation>
  </xs:annotation>
</xs:enumeration>
<xs:enumeration value="CC325A">
  <xs:annotation>
    <xs:documentation>Diversion Request Acknowledgement</xs:documentation>
  </xs:annotation>
</xs:enumeration>
<xs:enumeration value="CC328A">
  <xs:annotation>
    <xs:documentation>Entry Summary Request Acknowledgement</xs:documentation>
  </xs:annotation>
</xs:enumeration>
<xs:enumeration value="CC351A">
  <xs:annotation>
    <xs:documentation>Advanced Intervention Notification</xs:documentation>
  </xs:annotation>
</xs:enumeration>
<xs:enumeration value="CD906B">
  <xs:annotation>
    <xs:documentation>Functional NACK</xs:documentation>
  </xs:annotation>
</xs:enumeration>
<xs:enumeration value="CD917B">
  <xs:annotation>
    <xs:documentation>XML NACK</xs:documentation>
  </xs:annotation>
</xs:enumeration>
```



```
        </xs:enumeration>
    </xs:restriction>
</xs:simpleType>
<xs:complexType name="Submission">
    <xs:sequence>
        <xs:element name="EoriNumber" type="EoriNumberType" maxOccurs="1" minOccurs="1"/>
        <xs:element name="MessageDetails" type="MessageDetailsType" maxOccurs="1"
minOccurs="1"/>
    </xs:sequence>
</xs:complexType>
<xs:complexType name="Query">
    <xs:sequence>
        <xs:element name="EoriNumber" type="EoriNumberType" maxOccurs="1" minOccurs="1"/>
        <xs:element name="MRN" nillable="false" type="MRNType" minOccurs="0"/>
        <xs:element name="MessageType" nillable="false" type="MessageTypes" minOccurs="0"/>
        <xs:element name="DateFrom" nillable="false" type="xs:date"/>
        <xs:element name="DateTo" nillable="false" type="xs:date"/>
    </xs:sequence>
</xs:complexType>
</xs:schema>
```

4.2 IcsResponse Message

```
<xs:schema xmlns:xs="http://www.w3.org/2001/XMLSchema"
xmlns="http://eurodyn.com/ws/IcsResponse"
targetNamespace="http://eurodyn.com/ws/IcsResponse">
    <xs:element name="Response" type="ResponseType"/>
    <xs:complexType name="ResponseType">
        <xs:sequence>
            <xs:element name="SubmissionResponse" type="SubmissionRes" minOccurs="0"
maxOccurs="1"/>
            <xs:element name="QueryResponse" type="QueryRes" minOccurs="0" maxOccurs="1"/>
        </xs:sequence>
    </xs:complexType>
    <xs:simpleType name="ProcessingResultType">
        <xs:restriction base="xs:string">
            <xs:enumeration value="PROCESS OK"/>
            <xs:enumeration value="PROCESS FAILED"/>
        </xs:restriction>
    </xs:simpleType>
    <xs:simpleType name="QueryResultType">
        <xs:restriction base="xs:string">
```



```
<xs:enumeration value="QUERY OK"/>
<xs:enumeration value="NO RESULTS"/>
</xs:restriction>
</xs:simpleType>
<xs:complexType name="MessageDetailsType">
  <xs:sequence>
    <xs:element name="MessageType" type="MessageTypes"/>
    <xs:element name="MessageContent" type="xs:base64Binary"/>
  </xs:sequence>
</xs:complexType>
<xs:simpleType name="EoriNumberType">
  <xs:restriction base="StringLatin1">
    <xs:minLength value="3"/>
    <xs:maxLength value="17"/>
    <xs:pattern value="[A-Z]{2}[^\\n\\r]*"/>
  </xs:restriction>
</xs:simpleType>
<xs:simpleType name="StringLatin1">
  <xs:restriction base="xs:string">
    <xs:pattern value="\p{IsBasicLatin}+"/>
  </xs:restriction>
</xs:simpleType>
<xs:simpleType name="MessageTypes">
  <xs:annotation>
    <xs:documentation>Response Message Types</xs:documentation>
  </xs:annotation>
  <xs:restriction base="xs:token">
    <xs:enumeration value="CC304A">
      <xs:annotation>
        <xs:documentation>Entry Summary Declaration Amendment
Accepted</xs:documentation>
      </xs:annotation>
    </xs:enumeration>
    <xs:enumeration value="CC305A">
      <xs:annotation>
        <xs:documentation>Entry Summary Declaration Amendment
Rejection</xs:documentation>
      </xs:annotation>
    </xs:enumeration>
    <xs:enumeration value="CC313A">
      <xs:annotation>
```



```
<xs:documentation>Entry Summary Declaration Amendment</xs:documentation>
</xs:annotation>
</xs:enumeration>
<xs:enumeration value="CC315A">
  <xs:annotation>
    <xs:documentation>Entry Summary Declaration</xs:documentation>
  </xs:annotation>
</xs:enumeration>
<xs:enumeration value="CC316A">
  <xs:annotation>
    <xs:documentation>Entry Summary Declaration Rejected</xs:documentation>
  </xs:annotation>
</xs:enumeration>
<xs:enumeration value="CC323A">
  <xs:annotation>
    <xs:documentation>Diversion Request Import</xs:documentation>
  </xs:annotation>
</xs:enumeration>
<xs:enumeration value="CC324A">
  <xs:annotation>
    <xs:documentation>Diversion Request Rejected</xs:documentation>
  </xs:annotation>
</xs:enumeration>
<xs:enumeration value="CC325A">
  <xs:annotation>
    <xs:documentation>Diversion Request Acknowledgement</xs:documentation>
  </xs:annotation>
</xs:enumeration>
<xs:enumeration value="CC328A">
  <xs:annotation>
    <xs:documentation>Entry Summary Request Acknowledgement</xs:documentation>
  </xs:annotation>
</xs:enumeration>
<xs:enumeration value="CC351A">
  <xs:annotation>
    <xs:documentation>Advanced Intervention Notification</xs:documentation>
  </xs:annotation>
</xs:enumeration>
<xs:enumeration value="CD906B">
  <xs:annotation>
    <xs:documentation>Functional NACK</xs:documentation>
```



```
        </xs:annotation>
    </xs:enumeration>
    <xs:enumeration value="CD917B">
        <xs:annotation>
            <xs:documentation>XML NACK</xs:documentation>
        </xs:annotation>
    </xs:enumeration>
    <xs:enumeration value="ALL">
        <xs:annotation>
            <xs:documentation>Query for All Messages</xs:documentation>
        </xs:annotation>
    </xs:enumeration>
</xs:restriction>
</xs:simpleType>
<xs:complexType name="SubmissionRes">
    <xs:sequence>
        <xs:element name="EoriNumber" type="EoriNumberType" maxOccurs="1" minOccurs="1"/>
        <xs:element name="SubmissionResult" type="ProcessingResultType"/>
        <xs:element name="MessageDetails" type="MessageDetailsType" maxOccurs="1"
minOccurs="0"/>
    </xs:sequence>
</xs:complexType>
<xs:complexType name="QueryRes">
    <xs:sequence>
        <xs:element name="EoriNumber" type="EoriNumberType" maxOccurs="1" minOccurs="1"/>
        <xs:element name="QueryResult" type="QueryResultType"/>
        <xs:element name="MessageDetails" type="MessageDetailsType" maxOccurs="unbounded"
minOccurs="0"/>
    </xs:sequence>
</xs:complexType>
</xs:schema>
```

4.3 Ics Web Service Definition

```
<definitions
    targetNamespace="http://eurodyn.com/IcsService"
    xmlns="http://schemas.xmlsoap.org/wsdl/"
    xmlns:tns="http://eurodyn.com/IcsService"
    xmlns:mime="http://schemas.xmlsoap.org/wsdl/mime/"
    xmlns:soap12="http://schemas.xmlsoap.org/wsdl/soap12/"
```




```
xmlns:http="http://schemas.xmlsoap.org/wsdl/http/"
xmlns:xsd="http://www.w3.org/2001/XMLSchema"
xmlns:soap="http://schemas.xmlsoap.org/wsdl/soap/"
xmlns:req="http://eurodyn.com/ws/IcsRequest"
xmlns:res="http://eurodyn.com/ws/IcsResponse"
>
<types>
  <schema xmlns="http://www.w3.org/2001/XMLSchema">
    <import namespace="http://eurodyn.com/ws/IcsRequest"
schemaLocation="IcsRequestMessage.xsd"/>
  </schema>
  <schema xmlns="http://www.w3.org/2001/XMLSchema">
    <import namespace="http://eurodyn.com/ws/IcsResponse"
schemaLocation="IcsResponseMessage.xsd"/>
  </schema>
</types>
<message name="IcsRequestMessageType">
  <part name="parameters" element="req:Request"/>
</message>
<message name="IcsResponseMessageType">
  <part name="parameters" element="res:Response"/>
</message>
<portType name="IcsService">
  <operation name="process">
    <input message="tns:IcsRequestMessageType"/>
    <output message="tns:IcsResponseMessageType"/>
  </operation>
</portType>
<binding name="IcsService" type="tns:IcsService">
  <soap12:binding style="document" transport="http://schemas.xmlsoap.org/soap/http"/>
  <operation name="process">
    <soap12:operation soapAction="process" soapActionRequired="false"/>
    <input>
      <soap12:body use="literal"/>
    </input>
    <output>
      <soap12:body use="literal"/>
    </output>
  </operation>
</binding>
<service name="IcsService">
```



```
<port name="IcsService" binding="tns:IcsService">  
  <soap12:address location="http://127.0.0.1:8888/ics-ws/IcsService"/>  
</port>  
</service>  
</definitions>
```

END OF DOCUMENT